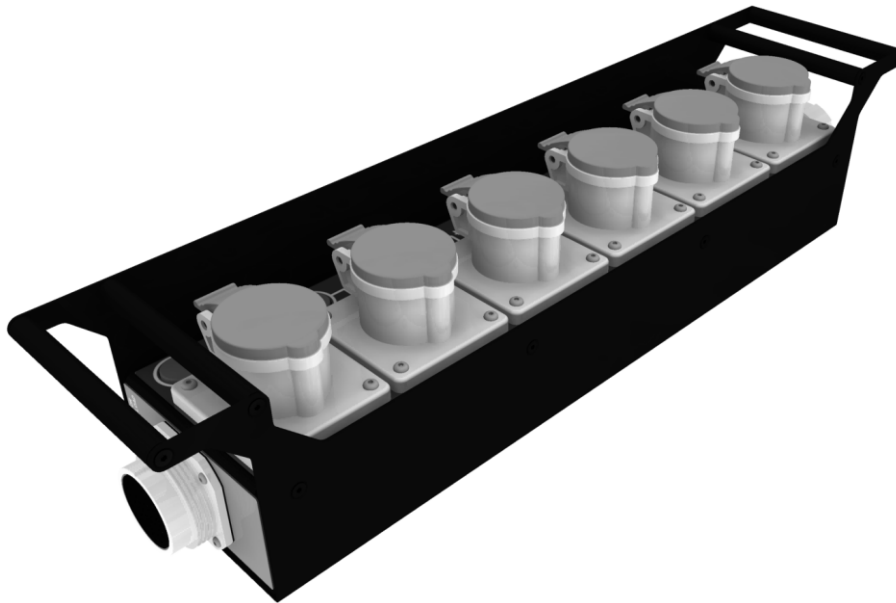


DATA SHEET



APPLICATION:

High quality scalable power distribution for the Professional Audio Visual, Rental, Staging and Installation Markets.

KEY FEATURES:

- ◆ High Quality Enclosure
- ◆ Durable Laser Engraved Legend
- ◆ Rugged Connectors
- ◆ Individual Circuit Status LED
- ◆ Designed to be used with our range of 63A Distribution boards with SocaPex Outlets
- ◆ Integrated Protective Handles
- ◆ Includes 2xM10 attachments for Truss mounting
- ◆ Includes durable protective bag

OPTIONS:

- ◆ Stainless steel enclosure option for corrosive environments

SPECIFICATIONS:

Inputs

- ◆ 1 x 19-Pin SocaPex
 - Wired to 6-ch Lighting Standard

Outputs

- ◆ 6 x 16A Circuits
 - 6 x 3-Pin C-form connector

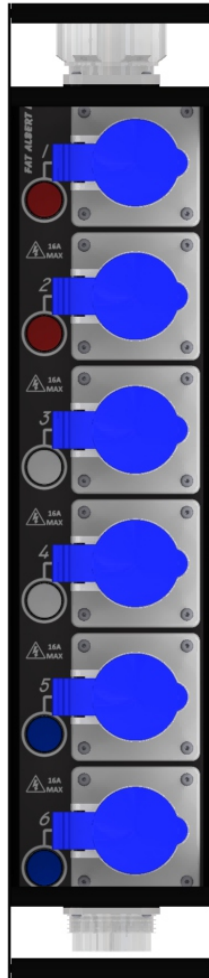
Loop Output

- ◆ 1 x 19-Pin SocaPex
 - Wired to 6-ch Lighting Standard
 - Wired in Parallel to main SocaPex Input

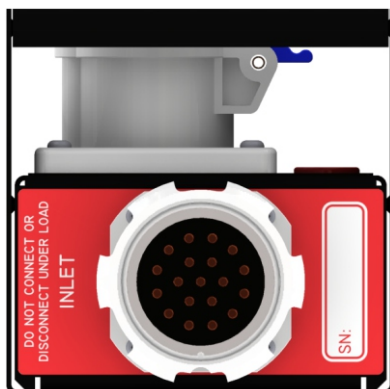


FAT ALBERT II

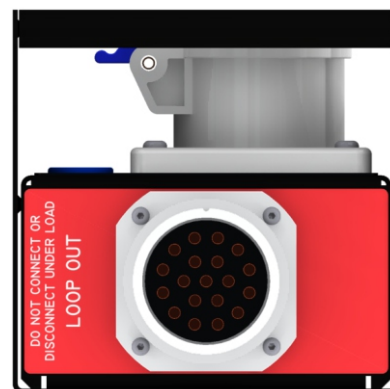
6-CH SOCAPEX
PORTABLE
POWER DISTRIBUTION
SYSTEM



TOP VIEW



INLET



LOOP OUT

DIMENSIONS:

- ◆ 573.3mm Wide
- ◆ 121.1mm Deep
- ◆ 120.6mm High

W W W . D W R D I S T R I B U T I O N . C O . Z A