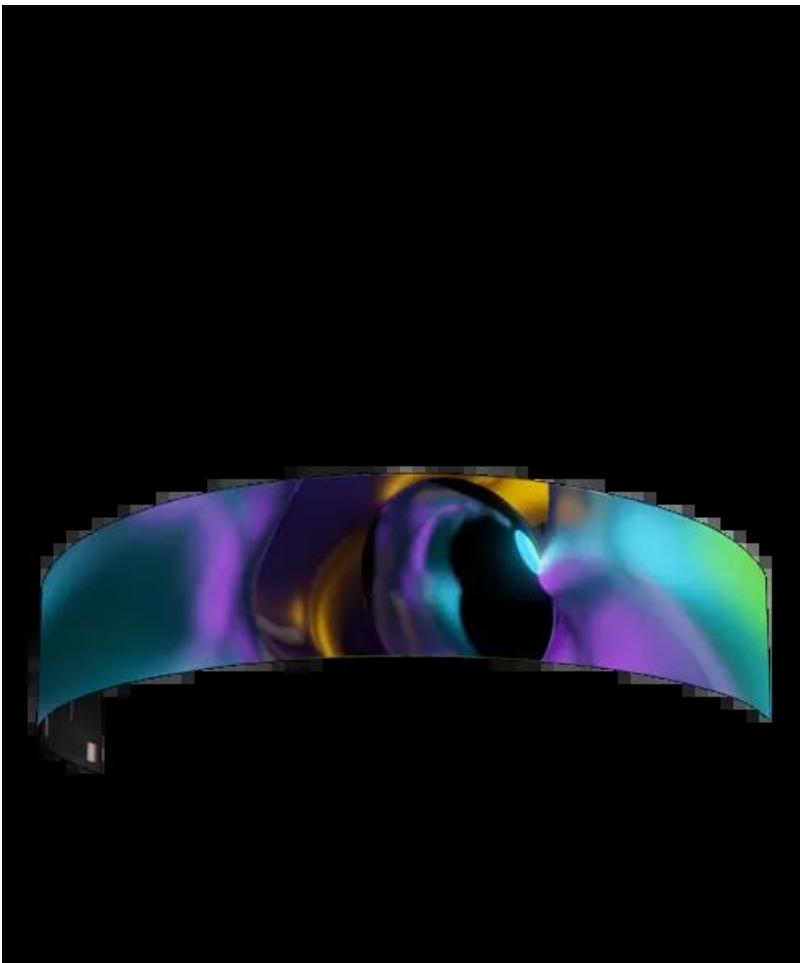


UHF - Commercial from Unilumin

Posted on April 7, 2026



Flexible LED Display Solution

P1.5/P1.8/P2.5/P3.2/P3.9

Dynamic creativity – available for arbitrary arc shape

Excellent image performance on color uniformity by the high flatness

Stress is evenly distributed to all parts of modules – Sustainable reliability

The advanced modular technology fully maximize the screen smoothness

Application Scenario



Broadcast



Corporate



Flexible Display, Creative Solution

- Dynamic creativity and ultra flexibility
- Sustainable reliability
- Streamline operational efficiency



Sustainable Reliability

- Metal Bottom Case

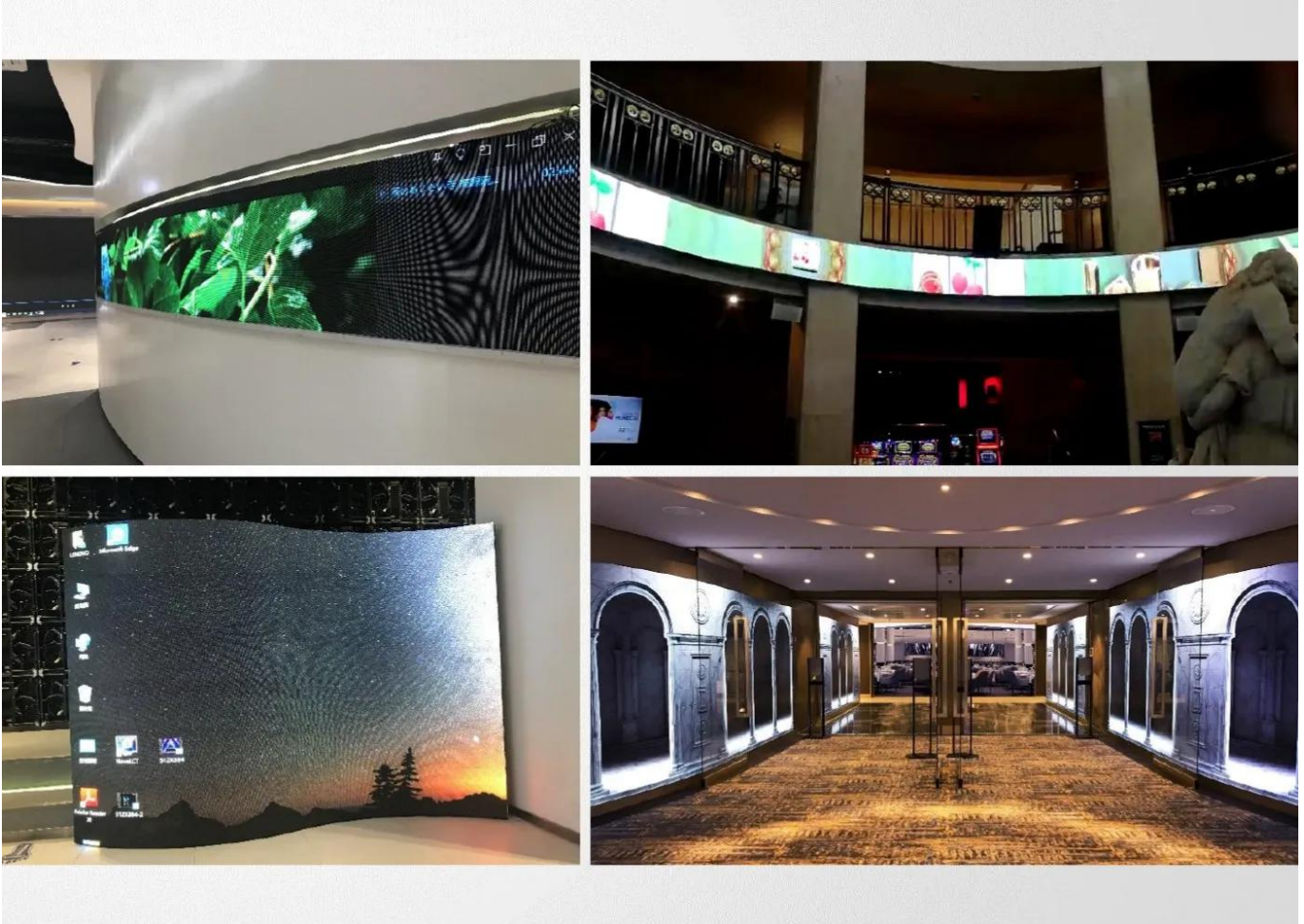
Metal bottom case ensures the stress is evenly distributed to all parts of modules when curved, and plays critical role in high flatness of video wall;

Metal bottom case limits the internal and external curve range, protects the module from excessive bending;

Has better heat dissipation effect



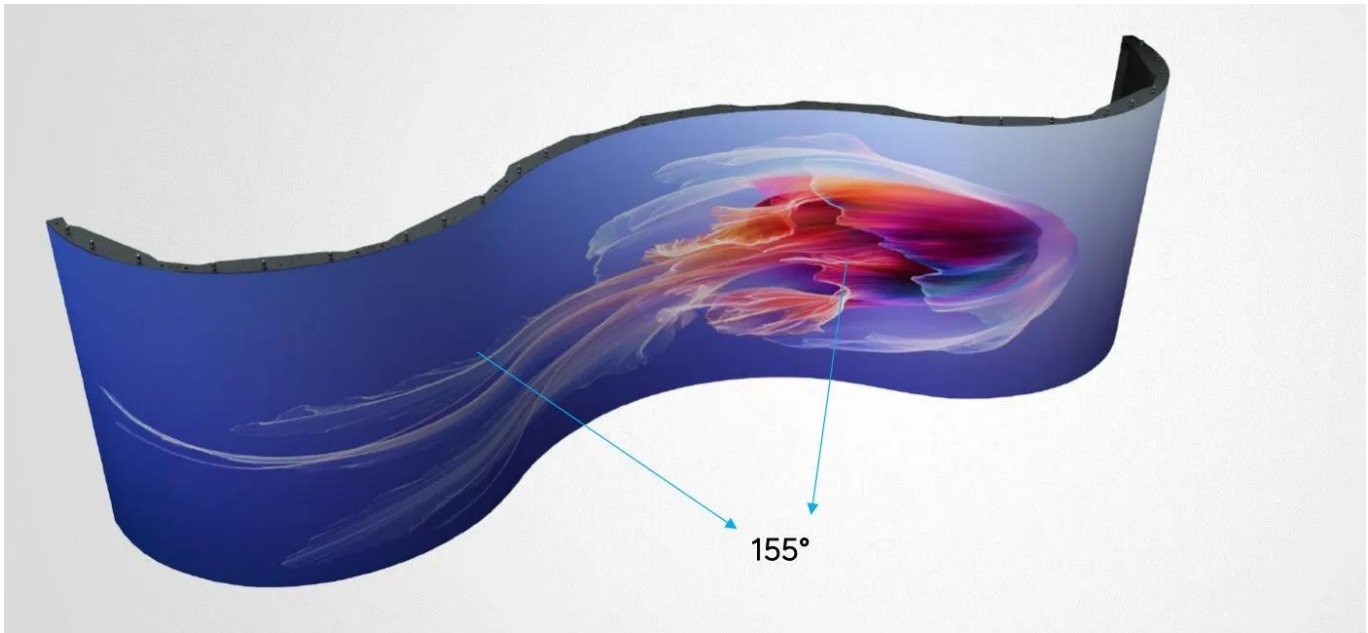
Dynamic Creativity



155° Viewing Angle

Horizontal and vertical 155° viewing angle.

Viewing screen content from a wider perspective and adapting to a variety of viewing environments, both front and side, will ensure a good viewing experience.



Case Study

Flexible LED 1.9mm, 155sqm, Spectrum of the Seas, 2019



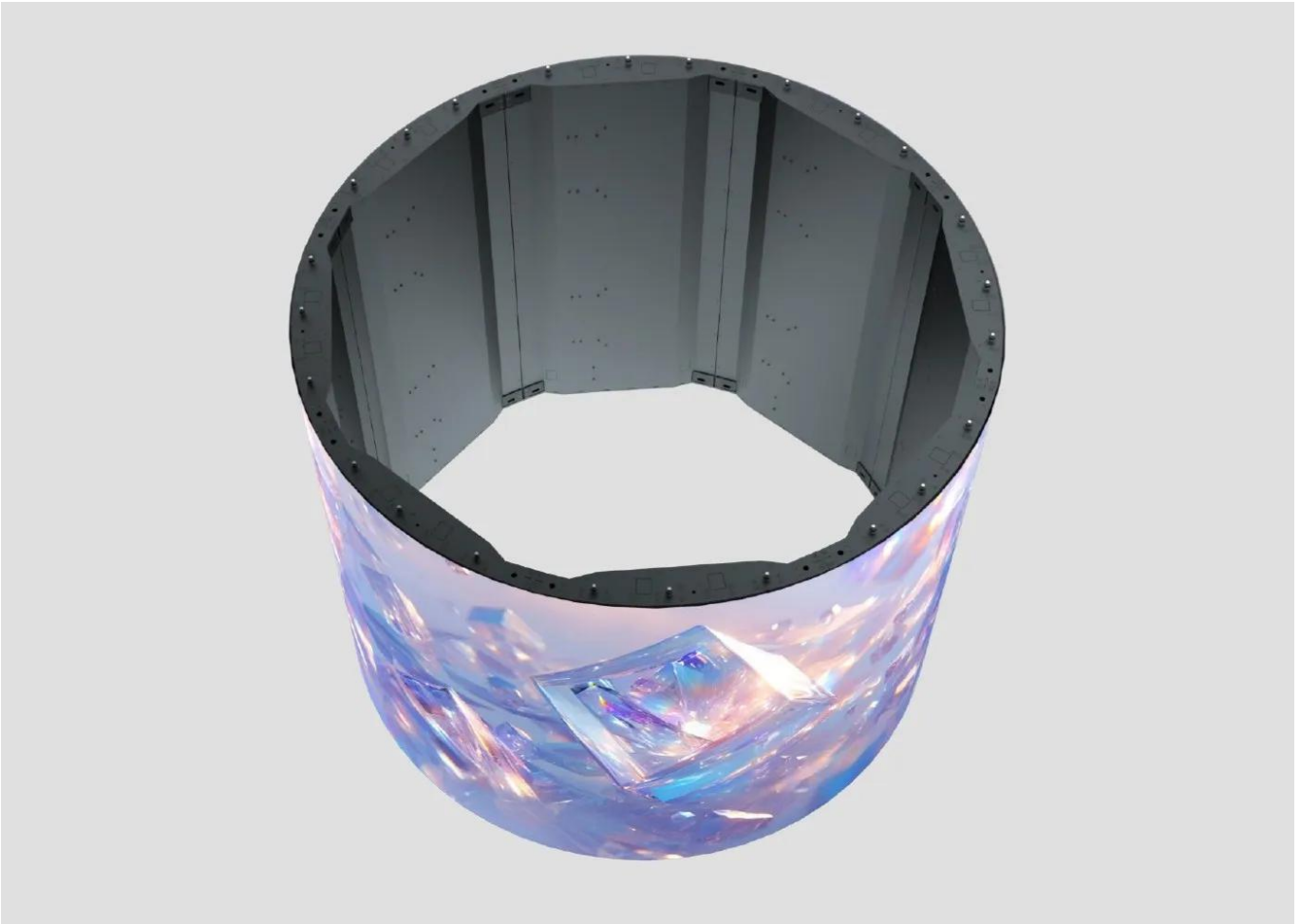
Sustainable Reliability

- PCB with FR-4 technology

UHF applied FR-4 technology on its PCB, which is trusted as highly reliable and secure technology in AV industry.

- Customized COS technology protection is available

Cos technology protects LEDs from collision, dust and water

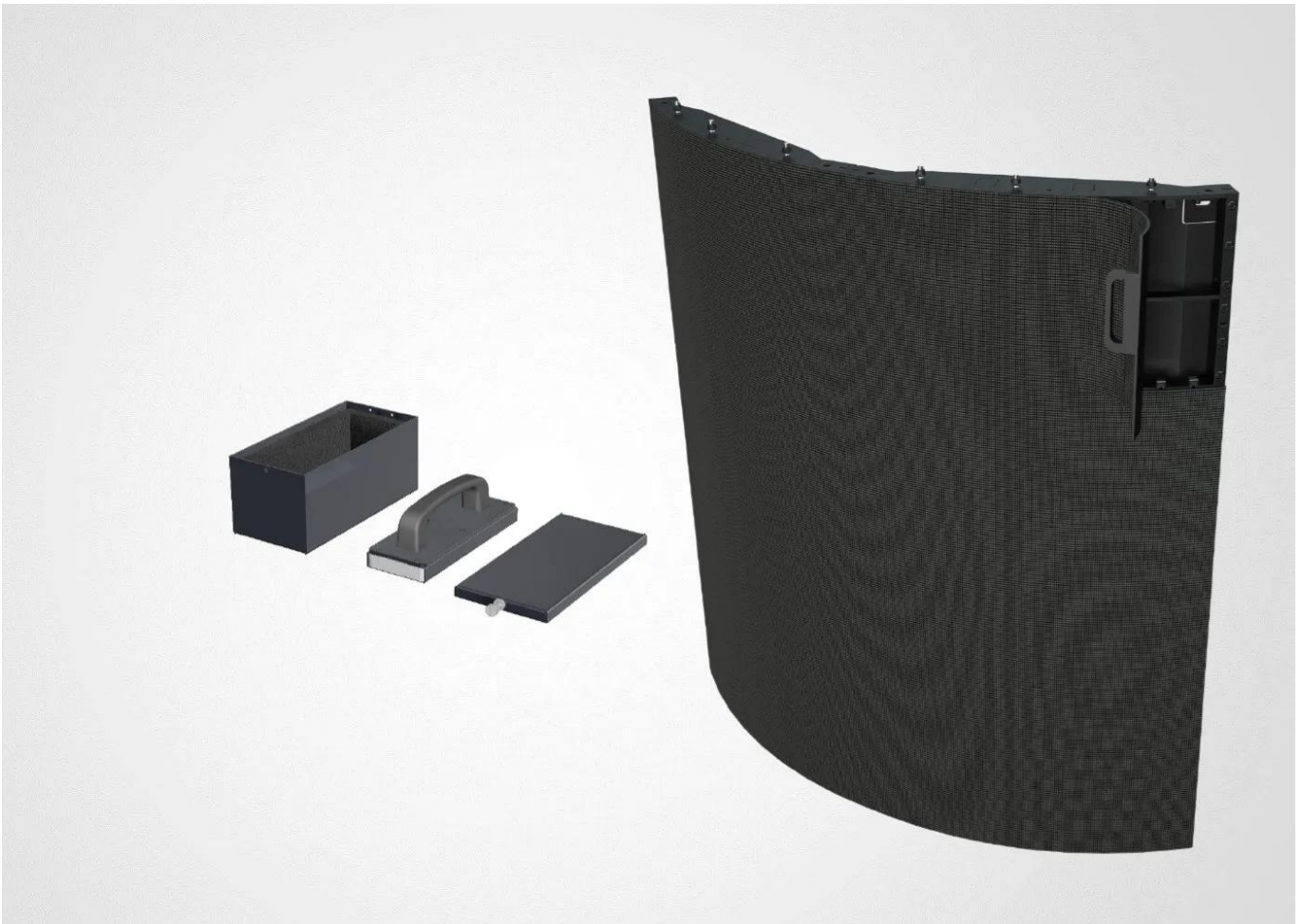


Streamline Operation Efficiency

- Arc module increases the speed of installation and curving precision.
- With each panel size 55" (customizable), it is natural to create native Full HD screens, at the same time ensures high screen flatness.

Streamline Operation Efficiency

Magnetic tool for front module maintenance



Ultra Flexible

UHF is able to create a circle with radius of 0.636m minimum. Owing exceptional flexibility and high density, UHF offers a wide range of design possibilities.

Flexible cabinet size, cabinet size can be customized according to project demands.

(Pixel pitch P1.5□P1.8□P2.5□P3.2□P3.9)

