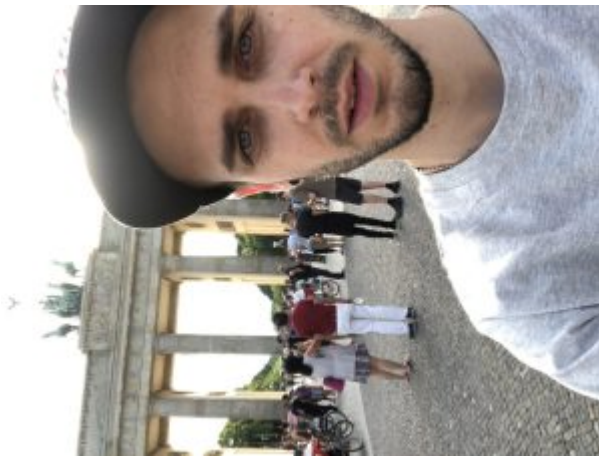


Robert Juliat dances in the Dalis Footlights at PLASA 2016

Posted on October 3, 2016



Robert Juliat on the Ambersphere stand at PLASA 2016

Robert Juliat reports a very successful experience at PLASA 2016 in London's Olympia where it shared a stand with its exclusive UK distributor, Ambersphere Solutions.

The focus was on Robert Juliat's LED capabilities with the new Dalis 862 Footlight taking centre stage. Launched officially at the show, Dalis 862 Footlight is a 150W LED batten of 48 white LED sources arranged in a double row. It shares RJ Dalis 860 Cyclight's exclusive patented optical system of fixed micro optical asymmetric reflectors and delivers a tunable white from 6500K to 2200K.

Robert Juliat dances in the Dalis Footlights at PLASA 2016



Uniquely, Dalis' two rows of reflectors are arranged to deliver long or short throw beam-lengths, with the LED sources controlled independently to upstage or downstage lighting. Set at the edge of the stage and not visible to the audience, Dalis 862 provides low-level lighting on performers from the front to the back of the stage.

Its silent, fanless operation makes Dalis Footlight perfect for opera houses and television studios and any sound-sensitive applications, but it is equally happy in shop windows and exhibitions where its clean lines will add a touch of class to any display.

"Bringing innovative ideas and lighting tools to the entertainment industry is a priority for Robert Juliat," says Sales Director Claus Spreyer. "We were happy to hear the Dalis 862 Footlight received a special commendation at this year's PLASA Innovation Awards where the judges deemed it to be a 'neat progression of company's Dalis cyc light.'"

Robert Juliat dances in the Dalis Footlights at PLASA 2016



Dalis 860 Cyclorama light was also on display, along with Robert Juliat's ZEP 660SX range of 300W LED profiles and its 300W Fresnel counterpart, ZEP 360LF Fresnel. Roxie, Robert Juliat's first LED followspot, which has proved an enormous success, made an appearance alongside the RJ Merlin 2500W HMI touring spot.