

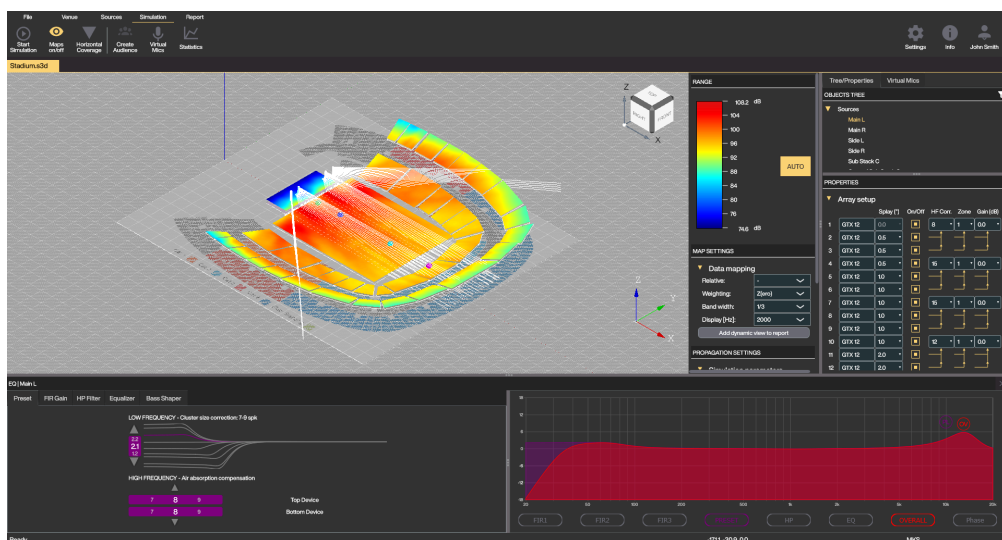
RDShape

Posted on February 2, 2026



PRECISION SYSTEM DESIGN AND SIMULATION

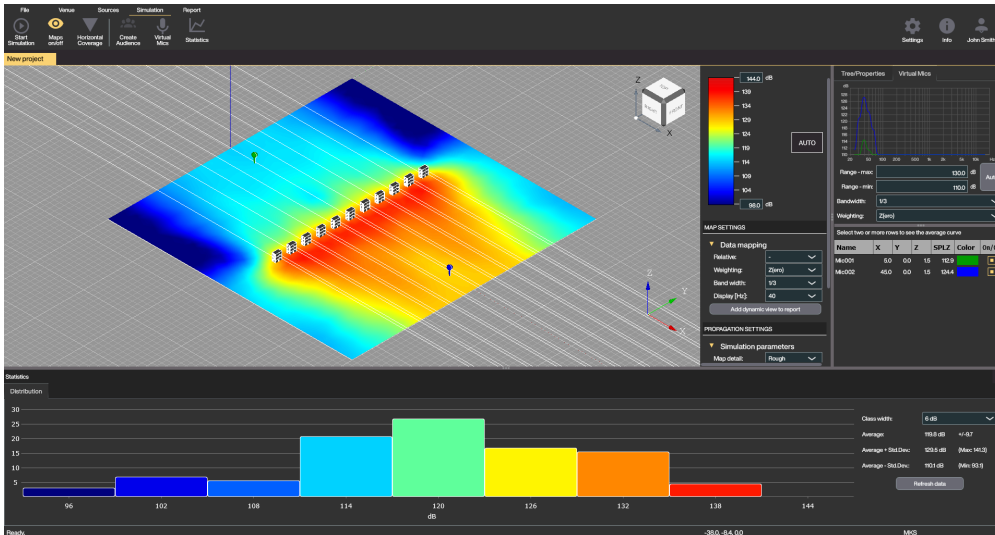
RDShape is an advanced simulation software, purpose-built for acoustic modeling and system optimization of RCF and TT+ Audio speaker and subwoofer systems. Designed to streamline the design, setup, and tuning process, RDShape is a versatile tool for touring professionals, venue designers, and sound engineers. Whether planning a small performance or a large-scale installation, RDShape ensures precise predictions, seamless configuration, and robust safety compliance. Following a year of advanced beta testing in real-world TT+ Audio touring deployments, RDShape is now available as a stable release, now supporting RCF products, with more models coming soon.



Key Features

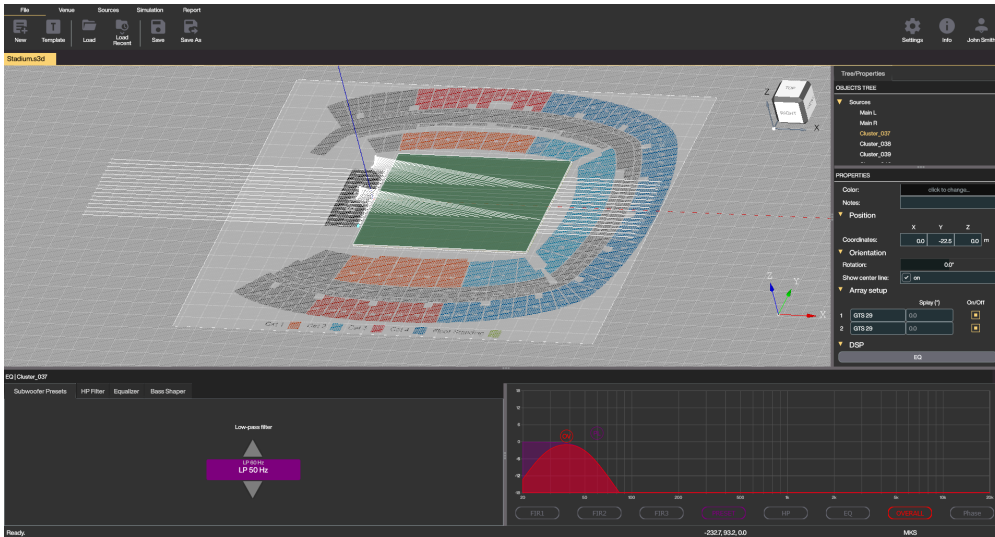
- **Accurate Acoustic Simulation** – Predict SPL and frequency response across audience areas, enabling finely tuned performance for every seat.

- **Comprehensive System Design** – Use the autoplay feature for optimal line array angles and evaluate subwoofer configurations with virtual microphones.
- **Rigging & Safety Integration** – Access detailed rigging data, including load, fly bar strength, pick points, and weight distribution, ensuring safe and efficient installations.
- **3D Venue Modeling** – Define audience planes and simulate sound propagation with a full 3D venue visualization, including IR-based virtual microphone measurements.
- **Streamlined Workflow** – Leverage templates, import venue basemaps, and export key design elements as STEP (ISO 10303) or PDF files for seamless collaboration.
- **Advanced EQ & Filters** – Fine-tune system performance with FIRPHASE filters, Bass-Shaper, and EQ presets directly within the software.
- **On-Axis audience area modeling iOS App** – Full compatibility with OK-Sound On-Axis.



TAILORED FOR EFFICIENCY

RDSHape offers a user-friendly interface with powerful tools like integrated templates, autoplay, and drag-and-drop sound source placement. Users can visualize energy distribution in high detail, evaluate statistical sound levels, and manage filter settings—all before system deployment at the venue.



TOURING AND FIXED INSTALLATIONS

From quick mobile setups to permanent installations, RDSHape reduces setup time, ensures safety, and provides a detailed acoustic blueprint. Its compatibility with RDNet allows for real-world system testing and optimization, bridging the gap between simulation and live deployment.

SPEAKERS CURRENTLY SUPPORTED — MORE COMING SOON