

New Ground Support Roof for MJ

19 January 2011



Thank you Robert Izzett for the photos

– Courtesy Vaughn Marti, MJ Event Gear

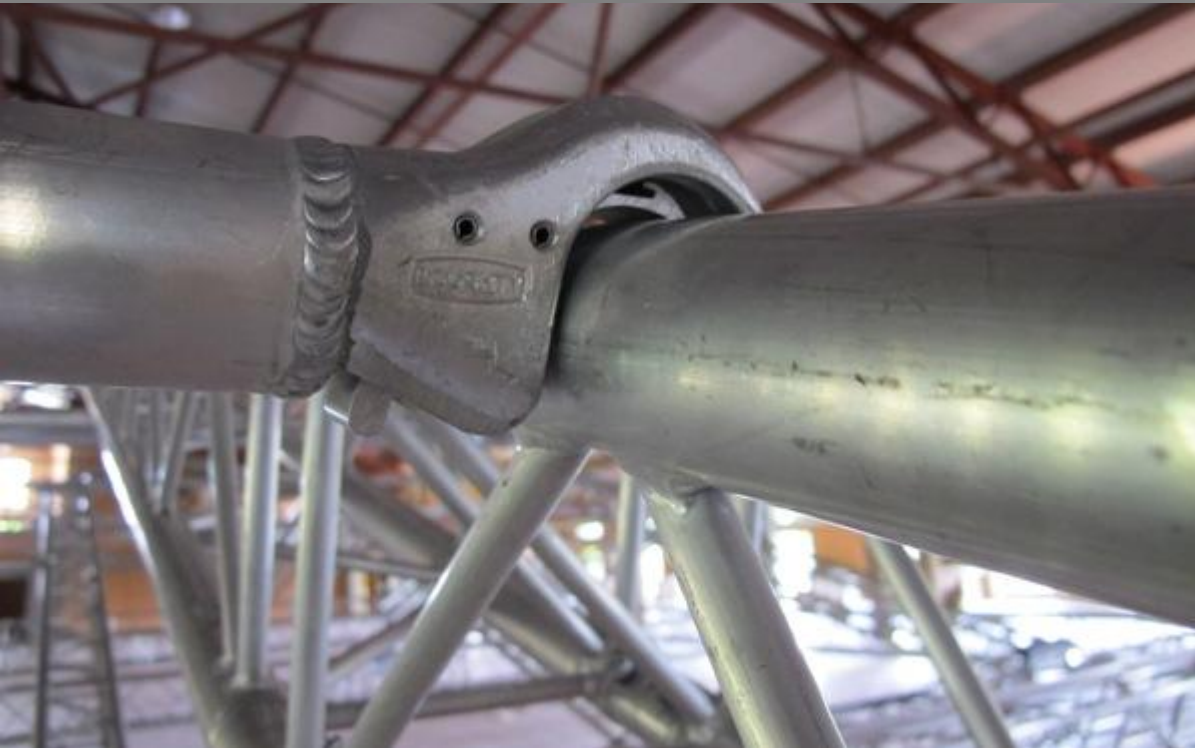
In preparation for a future event, MJ Event Gear began 2011 by erecting their new MPT Prolyte ground support roof structure. The primary objective of the exercise was to double check the safety requirements of the structure and to have the roof skins manufactured in time for the event.

The new structure accommodates a 10M wide by 8m deep performance area and also has a 5m wide by 8m deep sound wing on either side.



The entire

structure stands on eight legs and trims 7m high off the ground. Once off-loaded on site, the structure takes approximately 6 hours to build and consists of Prolyte 30 in its legs and Prolyte 40 in its roof frame.



This multi-purpose system was a perfect choice for MJ's Rigging Department as it easily accommodates various event applications and is an affordable solution to support technical event equipment and provide comfort from the sun and rain for the entertainment on stage.

As an extended service, MJ Event Gear also offers staging solutions to fit under this new roof structure.

For further information or bookings, please contact us on 011 326 2291



