

New arrival of the LED-F702 LED Controller

# LED-F702 LED Controller

Signal Sending

Video Process



Magnimage is thrilled to introduce the LED-F702 LED Controller. The system integrates signal sending and video processing and is effective at connecting led displays.



# Convenient Operation Me

Fast connection to the screen, quickly con  
screen configuration by buttons without upp



# Rich Input/Output Interface

Input: HDMI1.3, VGA, DVI, 3.5mm audio input

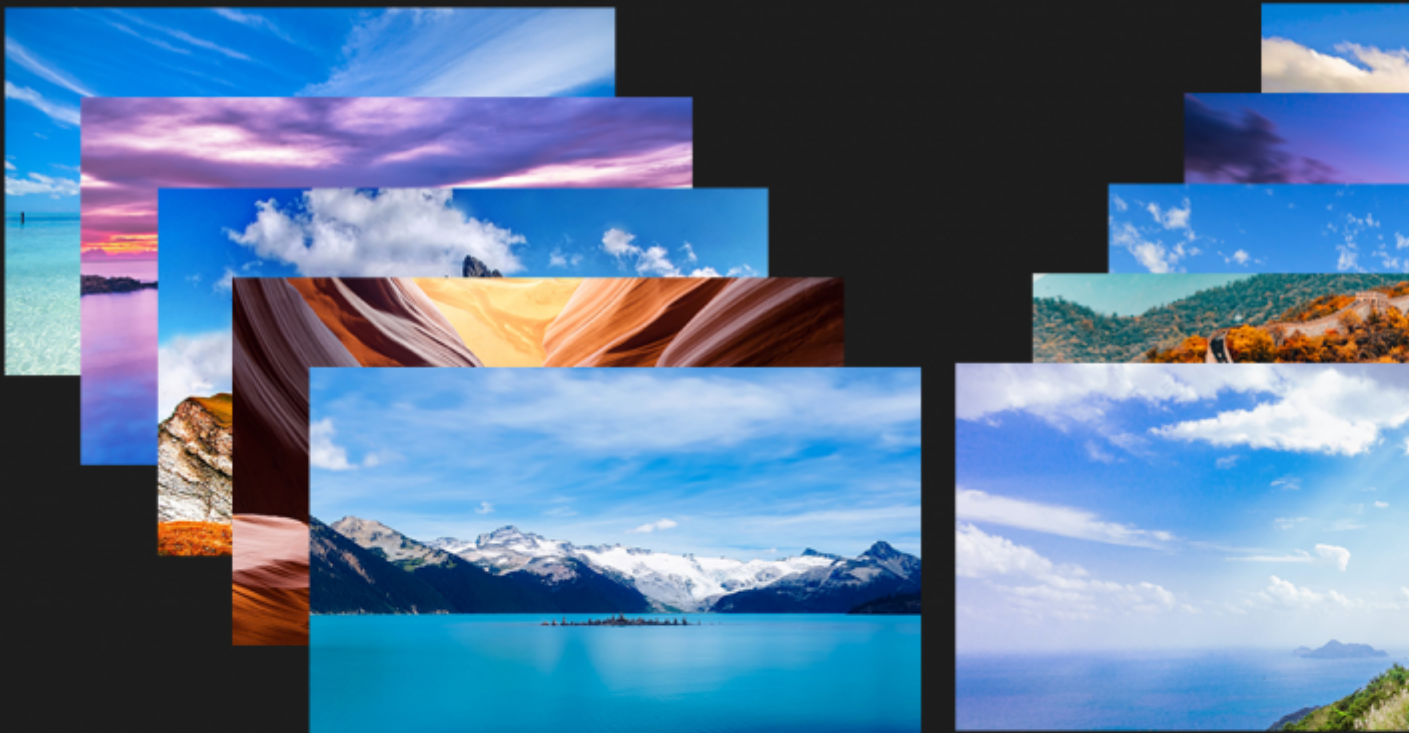
Output: 2 channels gigabit network





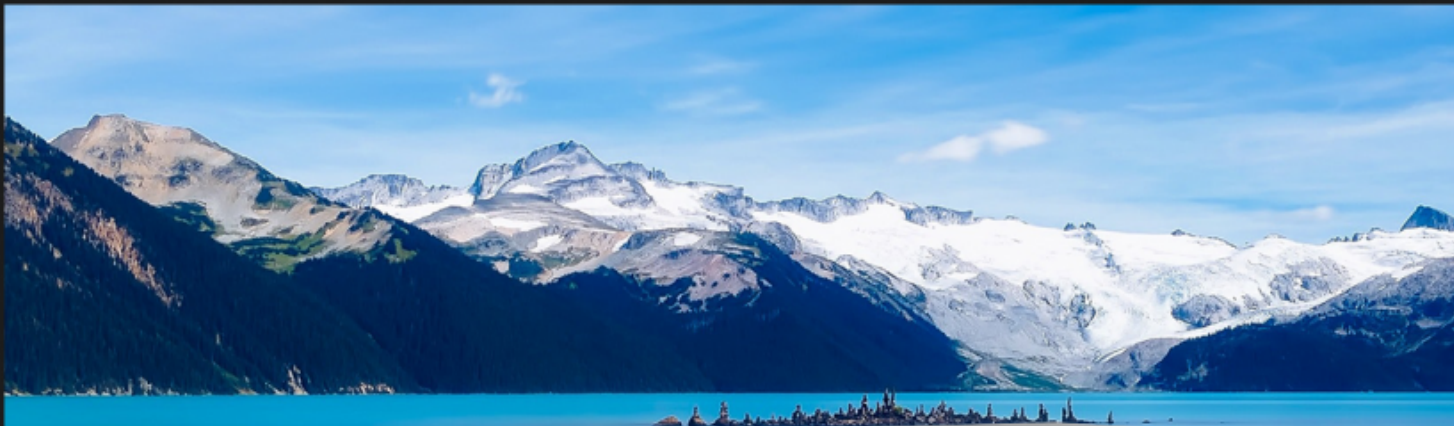
# Template Saving Function

Support to save 10 kinds of templates, can call at any time



# Large Loading Capacity

Maximum loading: 2M px  
Maximum loading of a single port: 1M px  
Maximum W\*H: 3840px \*1920px



## Other Functions

1. DVI input EDID management
2. Support partial / full screen display function
3. Support image capture and image freezing
4. Support dual screen display function
5. Support image zoom function
6. Support input signal hot backup function

\*This product is used with the receiving card of C-L series including  
M8S,M16S,M28S,M52S,M62S,M60S,M70S,M80S

[For more information visit: http://www.magnimage.com/article/detail/571](http://www.magnimage.com/article/detail/571)