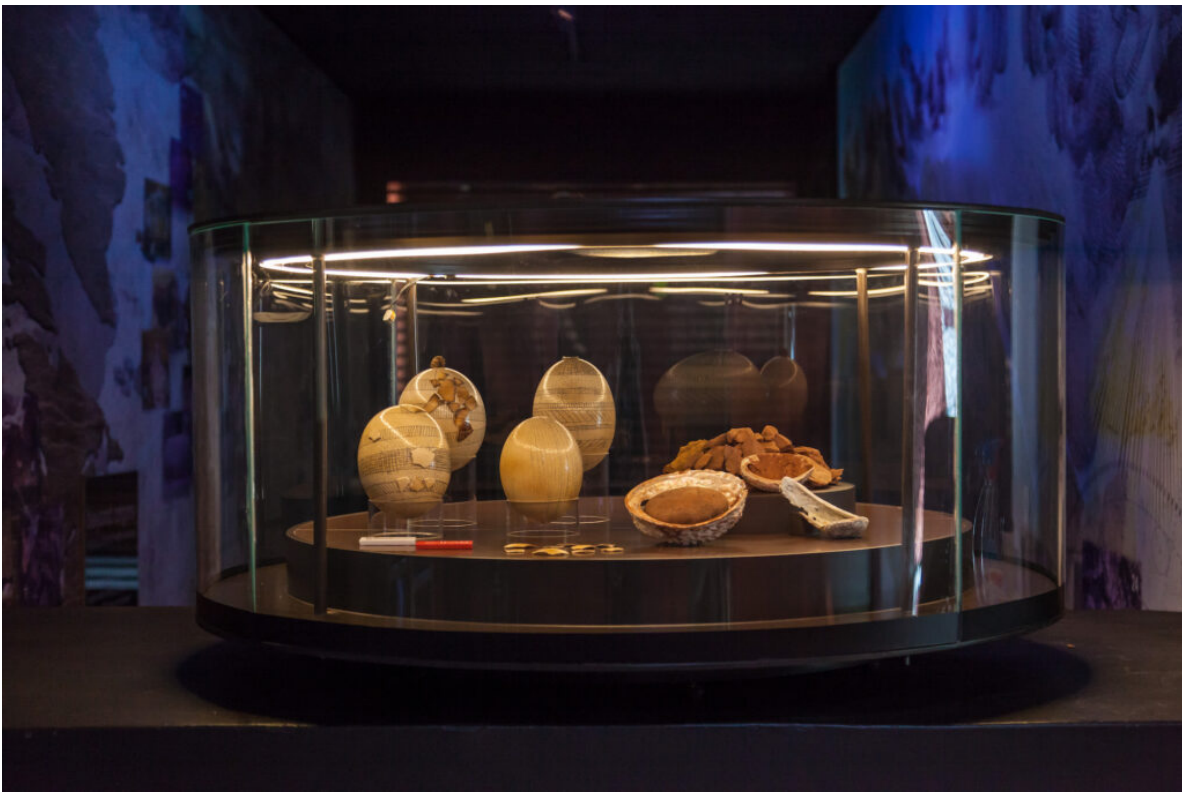


Origins Centre displays by MGG and DWR

Posted on August 2, 2021



When Origins Centre at WITS University in Johannesburg revamped its entrance foyer earlier this year, the museum turned to MGG to produce information display stands. MGG created all the tops and signage for the stands and appointed DWR Distribution to design and build the frames, also asking them to lend a helping leg or two for a circular glass display case.

Origins Centre displays by MGG and DWR

While MGG is a technical supply company, they offer a professional print and manufacturing service for small and large projects, headed by designer Karen Benadie. Work ranges from vinyl and laser cut outs to router work and 3D designs. In turn, DWR has a custom metal fabrication department to create items such as lighting bars, brackets and staircases.



“The metal stands had a wooden base that held an engraved rowmark panel,” explains Karen Benadie, who meticulously redrew the artwork supplied by Origins to ensure the layout was clear and visually attractive to museum visitors. “The stands were beautifully made, the angles precise and it was only one cylindrical and slanted shaped unit that initially proved to be more challenging than the others! I was very grateful to Keith Pugin and the team at DWR for making the frames. They provided professional advice on the elements required to ensure that the end product would work.”







DWR also manufactured steel rods that were the supports for a round, glass case. The case had a lid onto which LEDs were installed to highlight the artefacts within.

“The stands really came out well,” smiled Keith Pugin. “It was such a pleasure working with Karen and we were proud of the end product.”

Origins Centre displays by MGG and DWR

