



# MA Fixture Builder Training

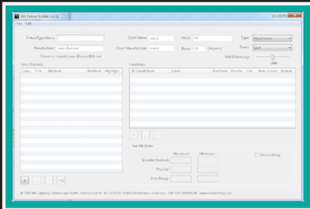
Posted on August 22, 2019





## MA FIXTURE BUILDER JHB TRAINING

RSVP



DATES : 21 OCTOBER

COST : R 850

TIME : 9am - 5pm



VENUE : DWR Block C1, Kimbult Industrial Park,  
9 Zeiss Road, Laserpark, Honeydew,  
Johannesburg, South Africa

FULL PAYMENT TO RESERVE SEAT

The MA Fixture Builder is a tool to create fixture types. It is developed to import fixture types created with the MA Fixture Builder into MA consoles or onPC software. A fixture type created with the MA Fixture Builder ensures a visualization in the MA 3D and dot2 3D.



PRESENTED BY  
**JANNIE DE JAGER**

### TOPICS COVERED

- READING DMX CHARTS
- MA FIXTURE BUILDER
- MULTI-INSTANCE FIXTURES
- BUILDING FIXTURES ON MA2
- INTRODUCTION TO GDTF

### REQUIREMENTS

- LAPTOP WITH
- FIXTURE BUILDER SOFTWARE
- MA2onPC SOFTWARE
- VALID ID

IT'S ALL ABOUT THE People



The MA Fixture Building training session, presented by DWR Distribution's Jannie de Jager, will be hosted on 21 October in Johannesburg and will be well worth attending.

The MA Fixture Builder is a tool to create fixture types. It has been developed to import fixture types, created with the MA Fixture Builder, into MA consoles or onPC software. A fixture type created with the MA Fixture Builder ensures a visualization in the MA 3D and dot2 3D.

Jannie will cover topics including Reading DMX Charts, Multi-Instance Fixtures, Building Fixtures on MA2 and an introduction to GDTF.

The cost is R850 and includes lunch and refreshments.

The course will be held at DWR Distribution, C1, Kimbult Industrial Park, 9 Zeiss Road, Laserpark, Honeydew.

Bookings online at:

<https://dwrdistribution.co.za/register/ma-fixture-builder-training-jhb-october-2019/>