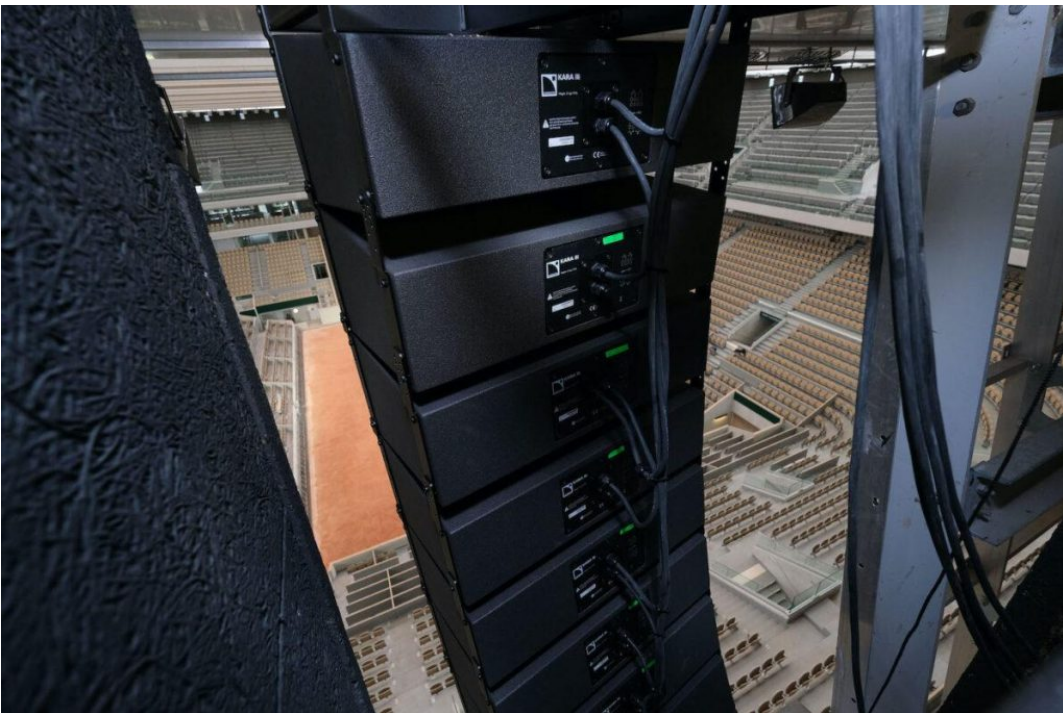


# L-Acoustics Serves Up Great Sound at Roland-Garros

Posted on October 5, 2021



L-Acoustics Kara Ili and KS21 provide coverage for the 15,000-capacity Court Philippe-Chatrier at Paris' Roland-Garros.

*K Series shines on Court Philippe-Chatrier one of the oldest tournaments in tennis history*

**Paris, France - October 2021** - The iconic centrepiece of Roland-Garros, the 15,000-capacity

## L-Acoustics Serves Up Great Sound at Roland-Garros

Court Philippe-Chatrier, host to one of the most anticipated events in the tennis calendar and the only Grand Slam tournament to be played on clay, has received a major makeover with the completion of a new retractable roof and night lighting installation. The project also marks a new era of sound for the fabled court, with the installation of an L-Acoustics K Series PA, which was managed by the French Tennis Federation (FFT) with the support of French acoustic and audio consultant, Scenarchie, and installed by leading integration company, SNEF.

The global renovation programme at Court Philippe-Chatrier was launched three years ago after the court was almost completely rebuilt to accommodate the strengthening required for the retractable roof, which weighs half that of the Eiffel Tower and was finally completed last year. “The next big step for us was to upgrade the audio system, so the action could be heard loud and clear by the audience at this year’s tournament,” says Julien Mauduit, Director of IT and audiovisual project lead at FFT.

A key challenge for the installation of the system was its architectural integration. “We had designed and built two concrete structures that would house the PA. Their size was carefully evaluated due to limitations on height, which meant we also had to find the best compromise between the length of the line source system and audio performance for the audience,” continues Mauduit. “Our second challenge was to choose a system that would work well with the retractable roof, which has a significant impact on the arena’s acoustics overall. We needed it to be highly versatile, providing perfect coverage and crystal-clear audio for both the open and closed roof scenarios.”

After a rigorous evaluation process, which included testing systems by four different loudspeaker manufacturers, L-Acoustics was chosen based on sound quality, build quality and price.

The final system design comprises two main hangs of nine Kara Ili with three KS21 per side, providing coverage for the majority of the court. These are hung in the concrete structures, positioned in the centre of the second tier of seats in the court’s southern tribune. The system is

## L-Acoustics Serves Up Great Sound at Roland-Garros

powered by seven LA4X amplified controllers. Thanks to L-Acoustics Panflex technology, coverage from the Kara Ili could be exactly matched to the audience geometry whilst maintaining a solid SPL level at 90m throw. Good intelligibility levels were preserved by limiting the overlap between the two hangs of Kara Ili and the existing PA, which is now used as a voice alarm system.



L-Acoustics Kara Ili and KS21 are hung in concrete structures, positioned in the centre of the second tier of seats in Court Philippe-Chatrier's southern tribune.

Overseen by the company's Rodolphe Roellinger, SNEF completed the installation in the summer of 2020, the new system is offering perfect sound distribution and audio quality.

"The feedback from audiences has been fantastic with people complimenting the sound and saying how clearly they can hear everything," concludes Mauduit. "On less clement days, we are also able to experience the system with the roof closed, and sound quality isn't affected in the slightest. Overall, we are very pleased with the installation and the support we received from the Scenarchie and L-Acoustics teams. The Court Philippe-Chatrier is a key venue for tennis

## L-Acoustics Serves Up Great Sound at Roland-Garros

competitions on the world stage, and we know that our L-Acoustics system will shine there.”



L-Acoustics Head of Application,  
Installation – France, North Africa,  
Switzerland on site at Court Philippe-  
Chatrier.

### **About L-Acoustics**

Founded in 1984 near Paris, France, L-Acoustics is the market leader in professional sound reinforcement technologies. With over 550 team members worldwide and offices in Paris, London, Singapore, Los Angeles, and New York, L-Acoustics is present in over 80 countries via our network of Certified Providers. Focused on solutions that elevate the audience experience, more than 20% of L-Acoustics’ talent is devoted to R&D in the areas of acoustics, applications, mechanics, electronics, signal processing, and software development. In recognition of creating innovative professional sound technology, L-Acoustics was named as one of *Fast Company*’s Most Innovative Companies of 2020.

Recognized for pioneering the line source array, L-Acoustics continues to shape the future of the

## L-Acoustics Serves Up Great Sound at Roland-Garros

professional audio industry with L-ISA Immersive Hyperreal Sound technology, a multidimensional, object-based approach to designing, mixing, and processing sound that results in extremely natural and intelligible audio, and a more vibrant, authentic connection between artists and their fans. Now also available for exceptional private sound spaces with L-Acoustics Creations designs.

L-Acoustics technologies can be heard in places like the Hollywood Bowl, Dickies Arena, Allianz Arena, home of Bayern Munich, or the Philharmonie de Paris, as well as the world's top-grossing festivals, and on tour with world-class artists such as Mark Knopfler, Aerosmith, and P!NK.