



KLANG:quelle XDM - The ultimate solution to deliver 16 XLR line level or AES3 outputs from Dante or MADI streams



KLANG:quelle XDM - The ultimate solution to deliver 16 XLR line level or AES3 outputs from Dante or MADI streams

Posted on February 4, 2025



KLANG:quelle XDM – The ultimate solution to deliver 16 XLR line level or AES3 outputs from Dante or MADI streams



Experience It First at ISE 2025

KLANG is proud to unveil the KLANG:quelle XDM, a versatile 1RU XLR breakout box that delivers seamless 32-bit digital-to-analogue audio conversions from Dante or MADI inputs for professional setups. Designed to expand and enhance audio systems with unparalleled flexibility, the :quelle XDM delivers 16 channels of output with user-configurable options for analogue XLR or digital AES3 formats—all in a compact, rack-mountable unit.



KLANG:quelle XDM – The ultimate solution to deliver 16 XLR line level or AES3 outputs from Dante or MADI streams



Whether as an addition to a KLANG immersive processor or as a standalone tool in any pro-audio environment, the :quelle XDM offers effortless integration and unmatched adaptability.

Connectivity and Control

At its core, the :quelle XDM bridges digital and analogue worlds with exceptional precision.



KLANG:quelle XDM – The ultimate solution to deliver 16 XLR line level or AES3 outputs from Dante or MADI streams



Front Panel Highlights: The unit features two Neutrik etherCON halo network ports for Dante connectivity, with built-in LED rings indicating network activity. The first port also supports Power over Ethernet (PoE) for streamlined setup. A high-resolution display and intuitive rotary control knob make it easy to configure settings like audio routing and XLR output type directly from the front panel.



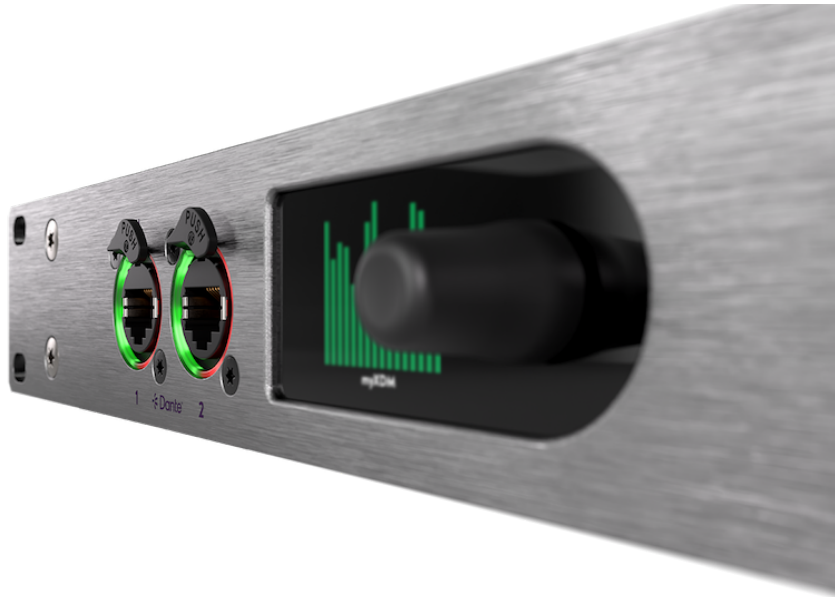
Rear Panel Features: Sixteen Neutrik XLR outputs allow for dynamic routing. Stereo pairs can be configured to deliver either two mono analogue line-level signals or a stereo digital AES3 signal through the same XLR connector. A blue halo light on the first XLR output of each pair provides an instant visual indicator of the selected output type.

Perfect for Any Audio Ecosystem

The :quelle XDM integrates effortlessly with existing KLANG systems, adding robust analogue or AES3 mix output capabilities for in-ear transmitters to immersive audio processors. For non-KLANG users, it serves as a powerful, brand-agnostic breakout box, enabling full control over inputs and outputs in any MADI or Dante-based audio setup.



KLANG:quelle XDM – The ultimate solution to deliver 16 XLR line level or AES3 outputs from Dante or MADI streams



“Our vision is to combine simplicity with cutting-edge technology,” explains

CTO Benedikt Krechel. “KLANG:quelle XDM embodies this vision, offering unparalleled flexibility and seamless integration into any Dante or MADI based audio setup. It works elegantly when operating as a standalone unit, or while expanding an existing KLANG immersive mixing system.”



See It Live at ISE 2025



KLANG:quelle XDM - The ultimate solution to deliver 16 XLR line level or AES3 outputs from Dante or MADI streams



Be among the first to experience the KLANG:quelle XDM at ISE 2025, Booth #7F300. Shipping is scheduled to begin in Q2 2025. With its advanced features and flexibility, the :quelle XDM sets a new standard in professional audio conversion.

Find out more via the KLANG website: <https://www.klang.com/xdm>