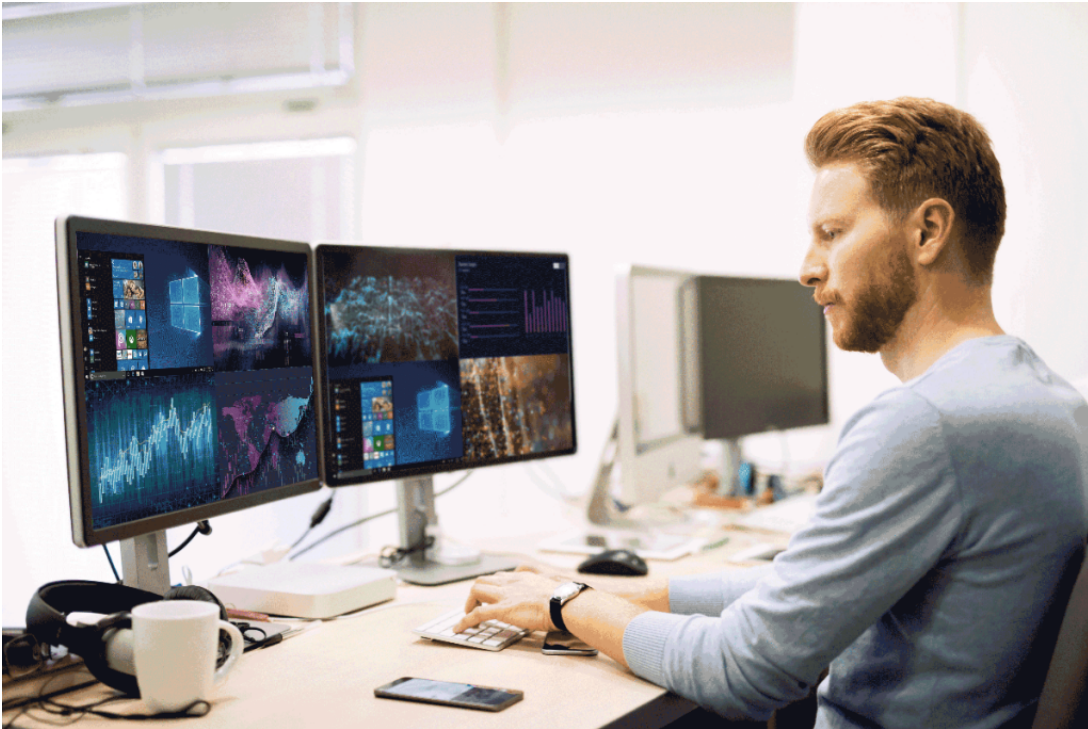




# **How to Boost Productivity Using Multi-Window KVM Systems - by tvONE**

Posted on March 18, 2021



Did you know that tvONE blogs hold #1 positions for key KVM phrases on google? In this article, you will find out How to Boost Productivity Using Multi-Window KVM Systems.

The “Zoom Generation” increasingly demands collaborative, multi-window environments as standard. When individuals do venture to their workplace, every minute they spend together needs to focus on seamless information sharing. This requirement will undoubtedly extend to KVM systems in the heart of many control rooms and operation centers in government, healthcare and industrial applications to allow operators to make the right decisions quickly.

In this blog, we will help you make the right technology choices when selecting your next KVM solution.

### **Why do KVM operations demand multi-viewing?**

Control Room professionals strive to continually enhance their decision-making processes by collecting, distributing, and visualizing the ever-increasing amounts of available data without any visual latency. In turn, this provides complete 360° situational awareness, helping operators and their stakeholders make optimal assessments of the situation. Multi-window viewing can take this usability, productivity, and interactivity a stage further.

### **What technical considerations should I check?**

There are many hurdles that need to be overcome when displaying multiple images via a KVM. The main issue is system bandwidth provision, which in turn will often manifest itself in a lower image quality or unacceptable video latency.

First, check what the image looks like in quad and full screen views as a poor-quality image will only hamper your decision making. Video should be displayed in the highest quality in all views.

Second, check the video latency in all modes as many systems reduce the frame rate to unacceptable levels, sometimes as slow as just a few frames per second. An acceptable level of performance is between one and 5 milliseconds per second as anything longer is unusable.

Last, check controllability of the system using USB devices. Can you use your mouse, keyboard and other peripherals in all modes? If you can, double-check there is no lag or discrepancy between the video and your mouse.

### **What features should I demand?**

The current crop of KVM systems offer many user-focused advantages over the previous generations. Check what additional features are offered and then demand these are available without paying for additional options.

First, check how the KVM can be controlled at both the individual workstations and the system as a whole. Can you choose system configuration using software, mouse clicks and keyboard shortcuts? Also, check whether the keyboards shortcuts are user customizable as there is nothing worse for an operator than having to learn new keystrokes when a new system is installed.

Next, check how quickly you go from quad to full screen mode and back again. Also check the speed to

switch to new sources or PC's – this should be almost instantaneous.

Next, ask if it is possible to set up system-wide scenarios or presets to allow quick changes between shifts. An example where this feature is very powerful is in broadcast. These control rooms are typically used by multiple productions everyday; therefore, the production team can switch their PC's between their desks to the control room with one button push.

Finally, ask how many displays with quad views can be linked together and then controlled with a single mouse and keyboard. Check if the displays can be freely positioned and mapped in the KVM control software so that the mouse is displayed correctly when crossing between screens.

### **Make sure your data is secure**

Many environments that use KVM solutions have very specific security requirements. While multi-windowing can boost the productivity levels of your team, it must not risk data security, the loss of personal information or infection by viruses. Therefore, make sure you ask some key questions about your data security. Check whether each operator can be allocated a unique username and password and have their access levels set according to their role. For example, you might want to limit the number of sources they can switch to or to deny the ability to copy data via USB sticks. In high pressure environments, such as transport hubs, you should check whether you can set user levels to allow higher-grade employees to automatically take control based on user rules.

### **Want to find out more?**

Magenta is a long-term, proven expert in KVM, signal extension and distribution solutions for medical, higher-education, government, and broadcast installations globally. Their custom, in-house solutions, have been developed over three decades and are guaranteed to deliver high-quality, low-latency performance. Magenta [Pathfinder](#) is a high-performance KVM over IP system that offers zero-latency performance and high-quality images in all modes of operation.

To find out more visit: [www.tvone.com](http://www.tvone.com). To make contact with your South African distributor visit DWR Distribution. Call 011 794 5023 or e-mail: [sales@dwrdistribution.co.za](mailto:sales@dwrdistribution.co.za)



## How to Boost Productivity Using Multi-Window KVM Systems - by tvONE