

## HC Series



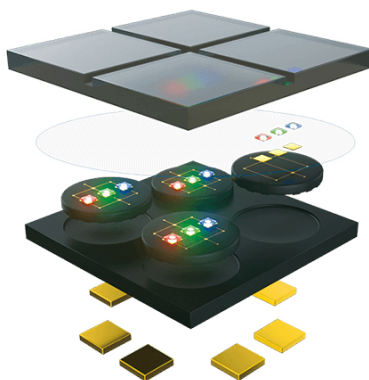
The HC series is a narrow pixel pitch display, featuring stunning HD vividness, lightweight design, practical, safety, and stability.

Pixel Pitch: 0.78mm, 0.93mm, 1.25mm, 1.56mm, 1.87mm

Panel Dimensions (W\*H) : 600\*337.5mm

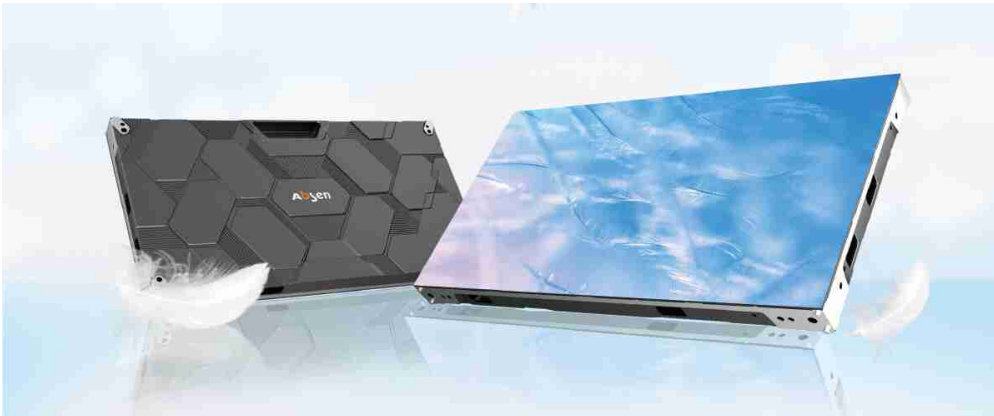


IMD 4-in-1 Package



Ultra Light & Thin

Lightweight design, a single panel weighs only 4.5KG, reducing the difficulty of disassembly and installation, simple and practical for a better experience



### Efficient Cooling and Stable Display

The panel has a honeycomb-shaped and 3D design with a larger cooling space, all-aluminum construction guarantees effective and consistent cooling, preserving the consistency of the display.



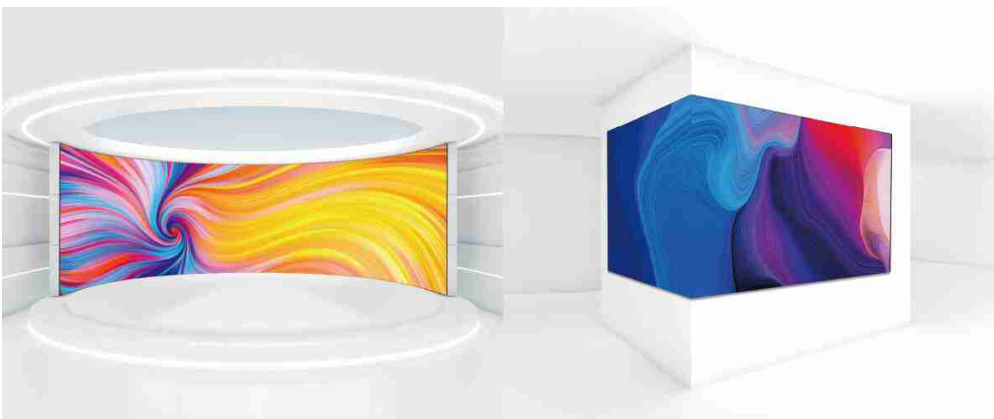
### High Grayscale and Low Brightness

PWM constant current output high-end chip achieves low brightness and high grey. Rich colours and vivid detail provide an optimal visual experience



### Flexible Splicing

Supports curved splicing, which can be adjusted from 0° to +3° to create a gentle and flexible curve, 90° splicing is also supported to blend in perfectly with the surroundings.



### Convenient Maintenance and Installation

Supports full front maintenance, module, HUB board and receiving card can all be front maintenance, that makes maintenance simpler and more effective.

