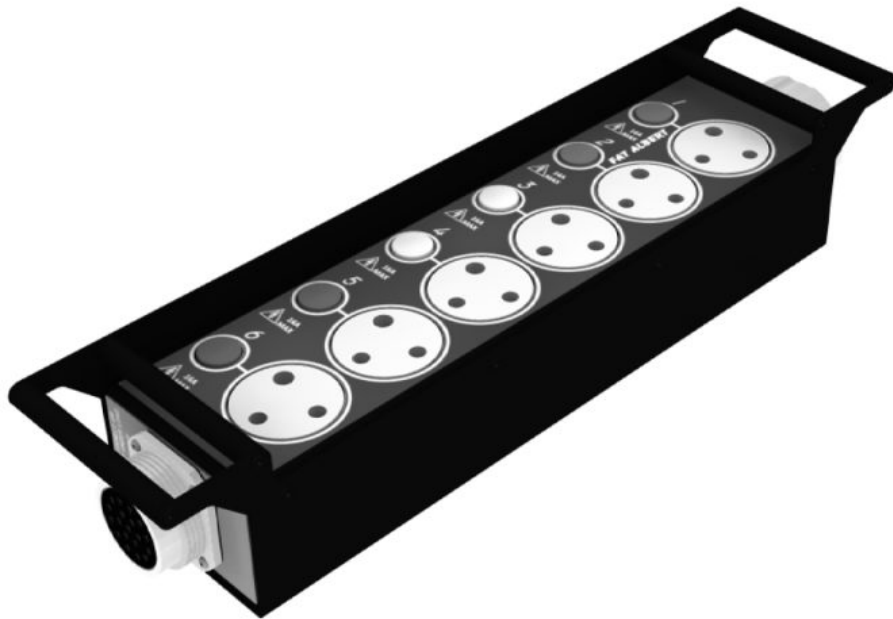


Fat Albert Socapex Distro

Posted on February 18, 2025



FAT ALBERT

Fat Albert Socapex Distro

APPLICATION:

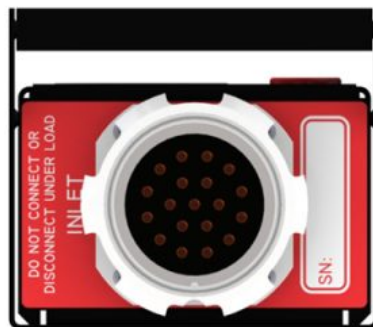
High quality scalable power distribution for the Professional Audio Visual, Rental, Staging and Installation Markets

KEY FEATURES:

- High Quality Enclosure
- Durable Laser Engraved Legend
- Rugged Connectors
- Individual Circuit Status LED
- Designed to be used with our range of 63A Distribution boards with Socapex Outlets
- Integrated Protective Handles
- Includes 2xM10 attachments for Truss mounting
- Includes durable protective bag



TOP VIEW



INLET



LOOP OUT

FAT ALBERT

OPTIONS:

Stainless steel enclosure option for corrosive environments



SPECIFICATIONS:

Inputs

1 x 19-Pin Socapex

- Wired to 6-ch Lighting Standard

Outputs

6 x 16A Circuits

- 6 x SA Plug*

Loop Output

1 x 19-Pin Socapex

- Wired to 6-ch Lighting Standard
- Wired in Parallel to main Socapex Input

DIMENSIONS:

- 480.8mm Wide
- 106.2mm Deep
- 90.6mm High

* Available with BS Standard / Euro Standard Outlet

See all [Power Distribution Systems](#) here!