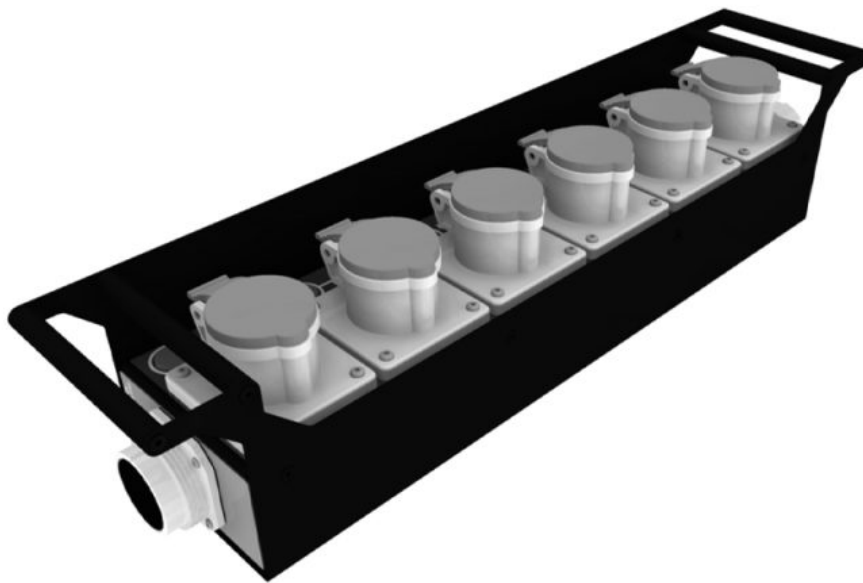


Fat Albert II Socapex Distro

Posted on February 18, 2025



FAT ALBERT II

Fat Albert II Socapex Distro

APPLICATION:

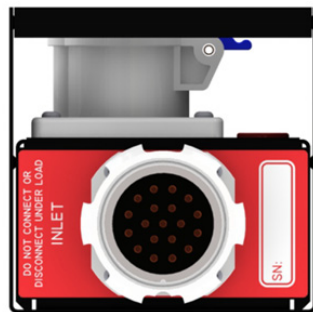
High quality scalable power distribution for the Professional Audio Visual, Rental, Staging and Installation Markets.

KEY FEATURES:

- High Quality Enclosure
- Durable Laser Engraved Legend
- Rugged Connectors
- Individual Circuit Status LED
- Designed to be used with our range of 63A Distribution boards with Socapex Outlets
- Integrated Protective Handles
- Includes 2xM10 attachments for Truss mounting
- Includes durable protective bag



TOP VIEW



INLET



LOOP OUT

FAT ALBERT II

SPECIFICATIONS:

Inputs

1 x 19-Pin Socapex

- Wired to 6-ch Lighting Standard

Outputs



6 x 16A Circuits

- 6 x 3-Pin C-form connector

Loop Output

1 x 19-Pin Socapex

- Wired to 6-ch Lighting Standard

- Wired in Parallel to main Socapex Input

OPTIONS:

Stainless steel enclosure option for corrosive environments

DIMENSIONS:

573.3mm Wide

121.1mm Deep

120.6mm High

See all [Power Distribution Systems](#) here!