

### DATA SHEET



Only Available with Earth Leakage

### APPLICATION:

High quality scalable power distribution for the Professional Audio Visual, Rental, Staging and Installation Markets.

### KEY FEATURES:

- ◆ High Quality Rack Mount Enclosure
- ◆ Durable Laser Engraved Legend
- ◆ High Quality Circuit Breakers
- ◆ Rugged Connectors
- ◆ Integrated 3-Phase Digital Multimeter
- ◆ Microprocessor Controlled L1-L2-L3-N-E Status LED
- ◆ Designed to be used as a stand-alone distribution board
- ◆ Service power outlets on Main Earth Leakage (Shared with main system)

### OPTIONS:

- ◆ Remote monitoring option \*\*
- ◆ Stainless steel enclosure option for corrosive environments

### SPECIFICATIONS:

#### Inputs

- ◆ 1 x 63A 380V 3-Phase L1-L2-L3+N+E
  - 1 x 5-Pin 63A C-form plug on 1.5m cable
  - 1 x 4-Pole 63A Overload Breaker
  - 30mA Earth Leakage Protection

#### Outputs

- ◆ 12 x 16A 1-Phase L+N+E Circuits
  - 12 x 16A SA Plug \*
  - 12 x 16A 1-Pole Overload Breaker

#### Service Outlets

- ◆ Service Sub-Distribution Board
  - 3 x 16A SA Service Plug \*
  - 3 x 16A 1-Pole Overload Breaker

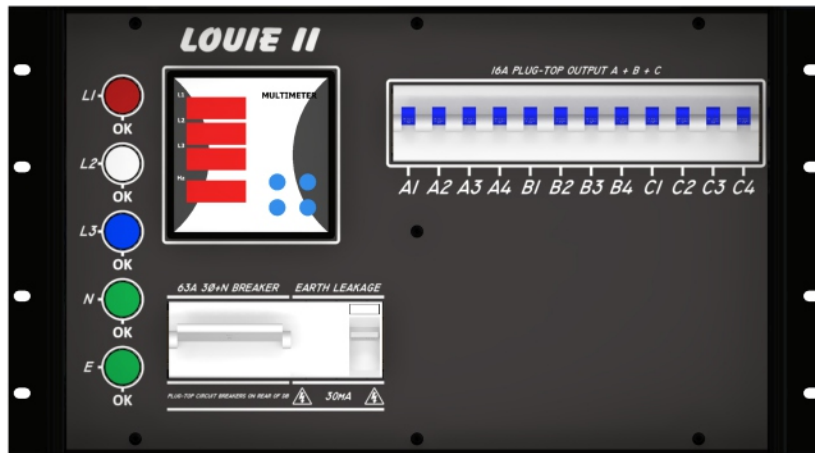
\* Available with BS Standard / Euro Standard Outlet

\*\* Requires separate network management unit (sold separately)

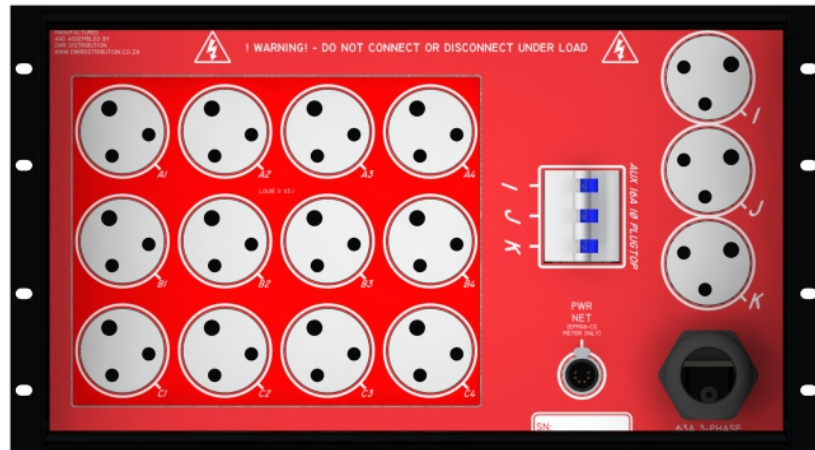


# LOUIE II

## 63A 3-PHASE RACK MOUNTABLE POWER DISTRIBUTION SYSTEM



ONLY AVAILABLE WITH EARTH LEAKAGE



REAR VIEW

### DIMENSIONS:

- ◆ 19" Rack Standard
- ◆ 6u Rack Space
- ◆ 436.4mm Mounting depth

W W W . D W R D I S T R I B U T I O N . C O . Z A